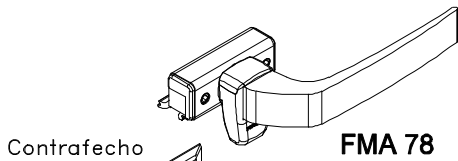
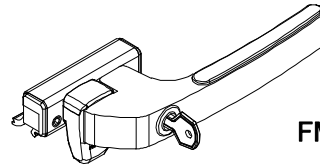
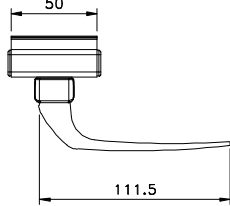


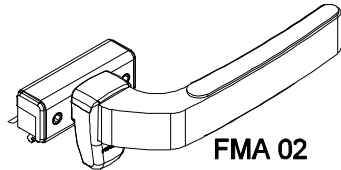
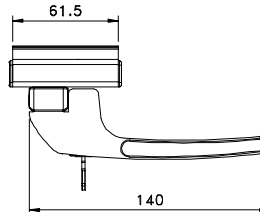
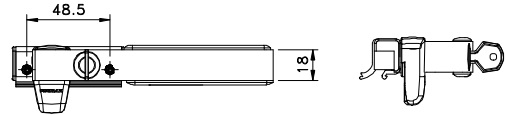
Maio/2011



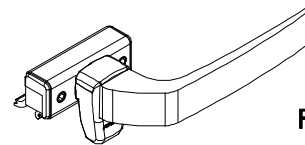
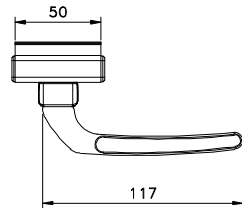
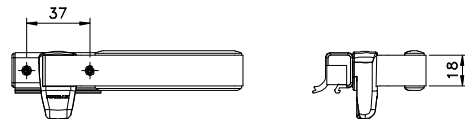
**FMA 78**



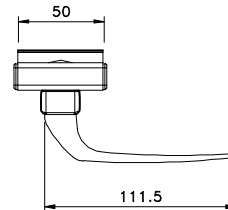
**FMA 80**



**FMA 02**

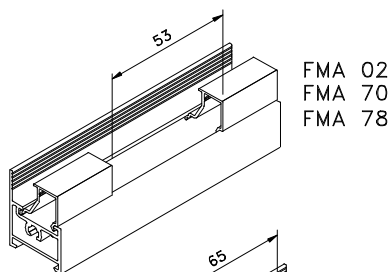


**FMA 70**

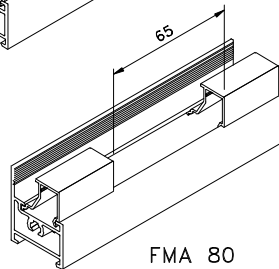


Vistas - sem escala

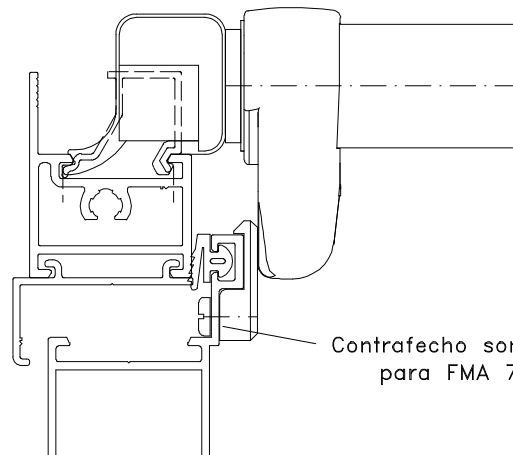
RECORTE DO BAGUETE



FMA 02  
FMA 70  
FMA 78



**FMA 80**

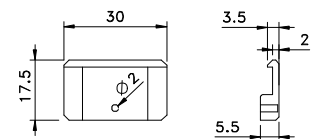


Contrafecho somente para FMA 78

Instalação - escala 1:1

**Composição**

- Base e cabo alumínio
- Lingueta, contrafecho e arremates nylon
- Cilindro latão/zamak (FMA80)
- Parafusos inox



Contrafecho - escala 1:2

Medidas em milímetros