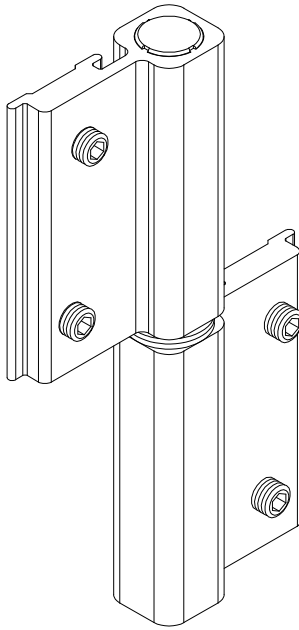
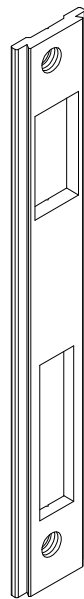
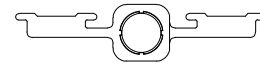
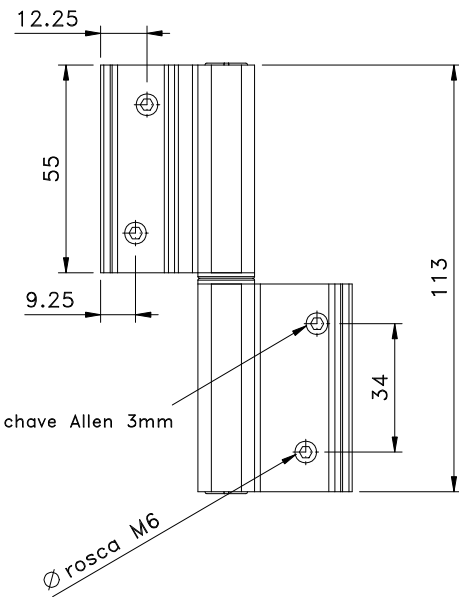


Novembro/2018

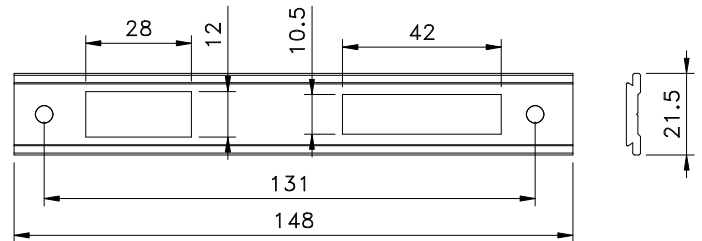


DOB 04

Carga: 10 Kg/DOB

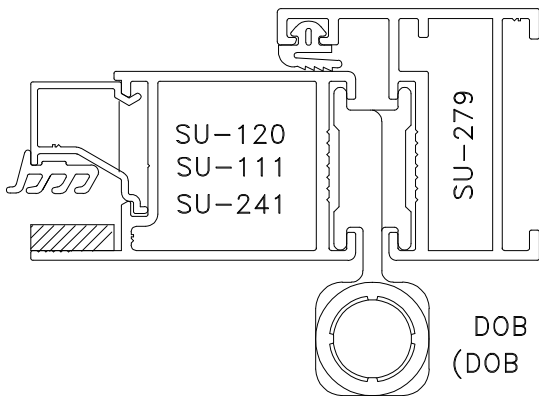


CTE 01

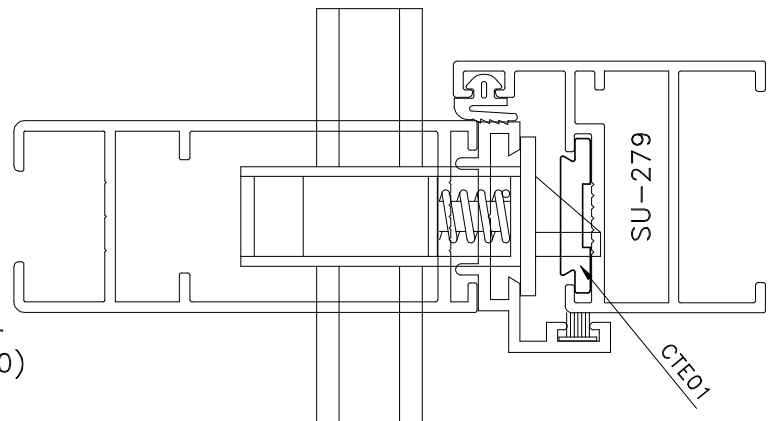


Vistas - escala 1:2

Dimensão máxima da porta
900mm x 2100mm.



DOB 04
(DOB 840)



Medidas em milímetros

Composição

- Estrutura alumínio (CTE/DOB)
- Eixo alumínio (DOB)
- Buchas poliamida 6.6 (DOB)
- Parafusos M6 x 8 inox (DOB)
- Parafusos M6 x 6 inox (CTE)

Instalação - escala 1:1