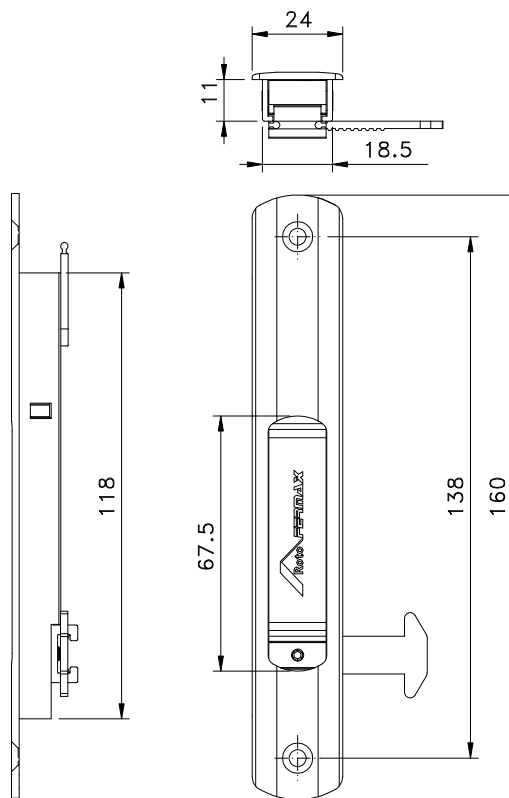


**Sem chave**  
FEC93 manual  
FEC125 autom.

**Com chave**  
FEC94 manual  
FEC126 autom.

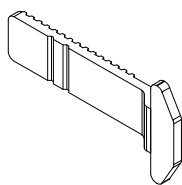
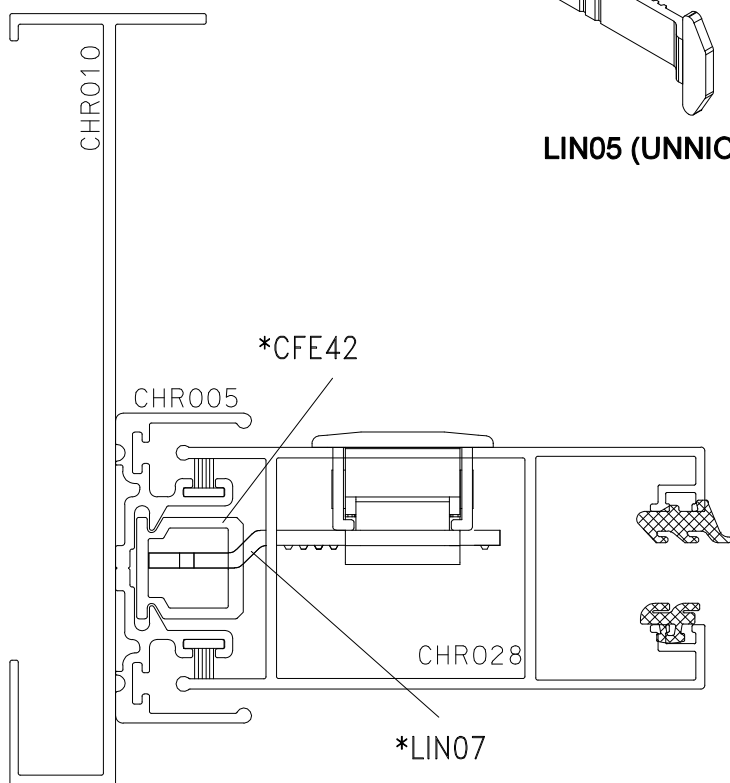
Formação de Código: Produto + Derivação Cores Padrão		
A003	Anodizado	Bronze
A006	Anodizado	Fosco
P021	Pintado	Branco
P022	Pintado	Preto

Medidas em milímetros

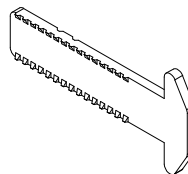


■ Vistas: escala 1:1

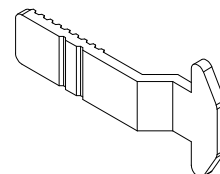
■ Instalação/Vistas: escala 1:1



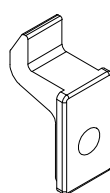
LIN05 (UNNION)



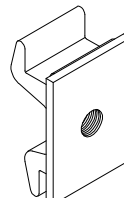
LIN02 (ECOLINE 2.5)



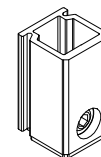
LIN07 (CHROMA)



CFE22 (UNNION / ECOLINE 2.5)



CFE23 (UNNION / ECOLINE 2.5)



CFE42 (CHROMA)

\* VENDIDOS SEPARADAMENTE

■ Composição

Estrutura alumínio  
Lingueta/trava aço inox  
Mola aço carbono (FEC125/126)  
Contrafecho Alumínio/Nylon