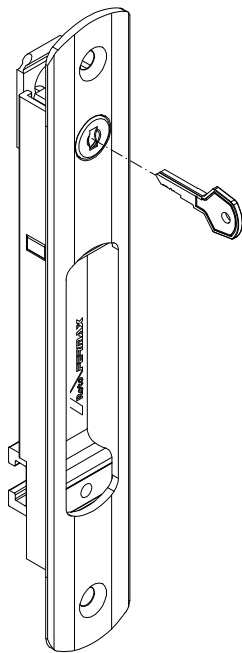


Sem chave
FEC93 manual
FEC125 autom.

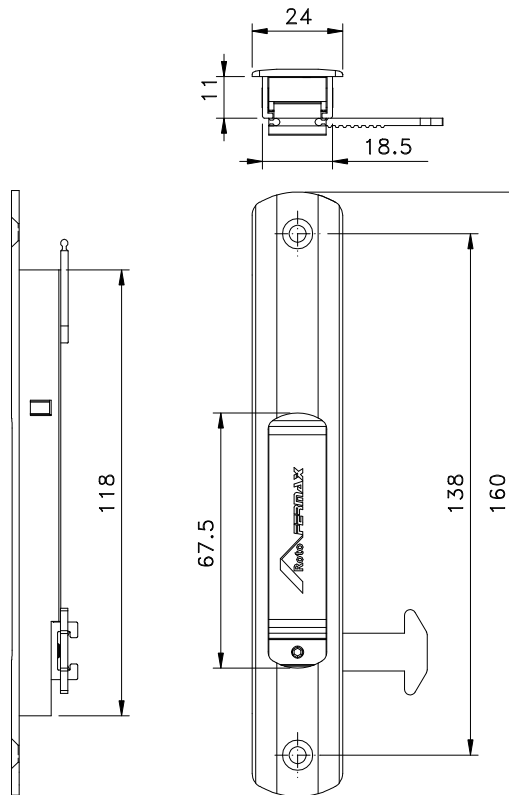


Com chave
FEC94 manual
FEC126 autom.

Formação de Código: Produto + Derivação
Cores Padrão

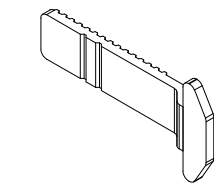
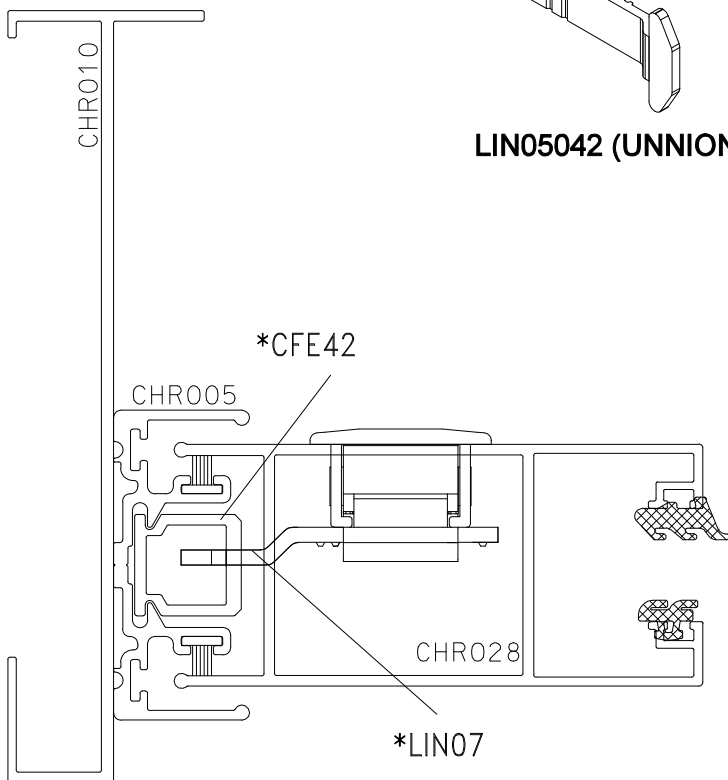
A003	Anodizado	Bronze
A006	Anodizado	Fosco
P021	Pintado	Branco
P022	Pintado	Preto

Medidas em milímetros

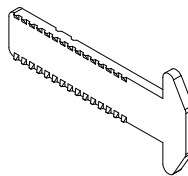


■ Vistas: escala 1:1

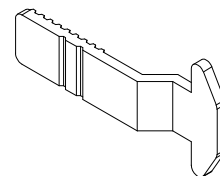
■ Instalação/Vistas: escala 1:1



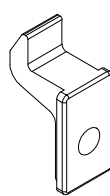
LIN05042 (UNNION)



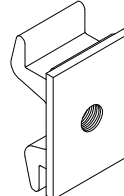
LIN02042 (ECOLINE 2.5)



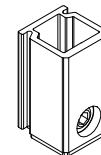
LIN07042 (CHROMA)



CFE22 (UNNION / ECOLINE 2.5)



CFE23 (UNNION / ECOLINE 2.5)



CFE42 (CHROMA)

■ Composição

- Estrutura alumínio
- Lingueta/trava aço inox
- Mola aço carbono (FEC125/126)
- Contrafecho Zamak (CFE22/23)
- Contrafecho Alumínio/Nylon (CFE42)
- Chave latão (FEC94/126)
- Parafusos inox

* VENDIDOS SEPARADAMENTE