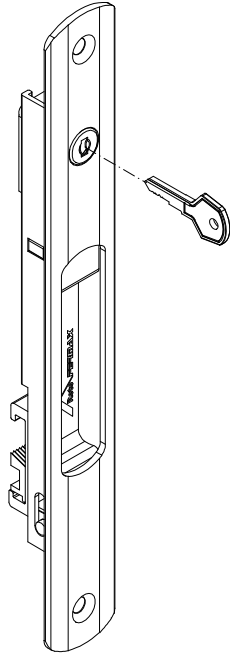
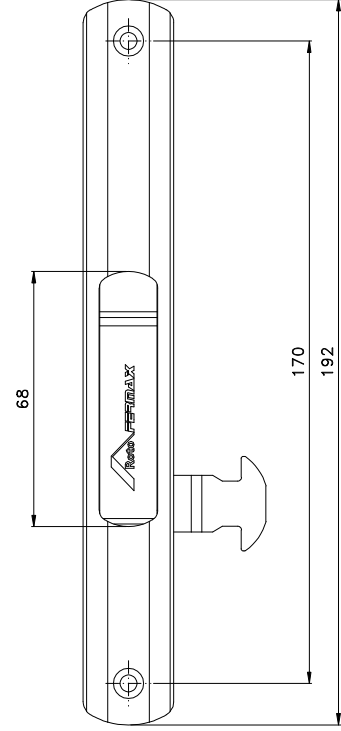
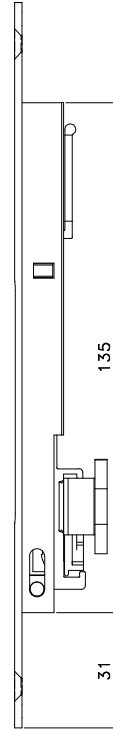
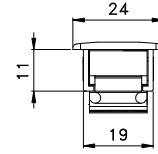


Sem chave
FEC95 manual
FEC127 autom.



Com chave
FEC96 manual
FEC128 autom.



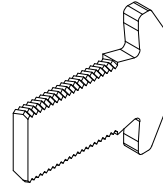
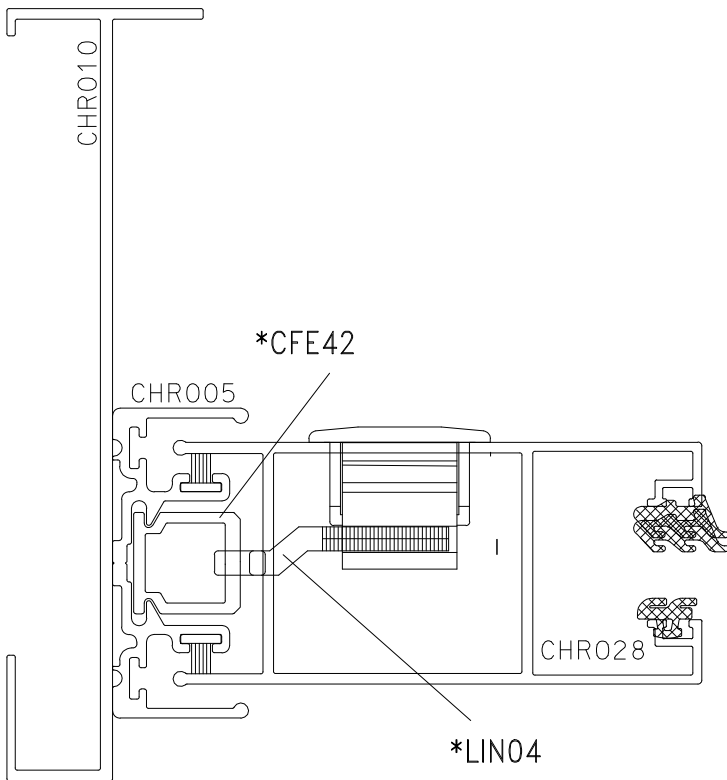
Medidas em milímetros

■ Vistas: escala 1:2

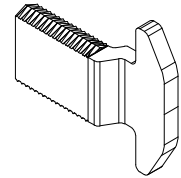
Formação de Código: Produto + Derivação
Cores Padrão

A003	Anodizado	Bronze
A006	Anodizado	Fosco
P021	Pintado	Branco
P022	Pintado	Preto

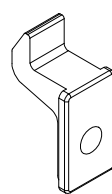
■ Instalação/Vistas: escala 1:1



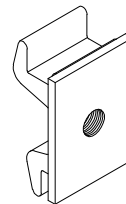
LIN03 (ECOLINE 2.5)



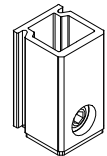
LIN04 (UNNION/CHROMA)



CFE22 (UNNION / ECOLINE 2.5)



CFE23 (UNNION / ECOLINE 2.5)



CFE42 (CHROMA)

* VENDIDOS SEPARADAMENTE

■ Composição

- Estrutura alumínio
- Lingueta Zamak
- Mola aço carbono (FEC127/128)
- Contrafecho Alumínio/Nylon

Dezembro/2019